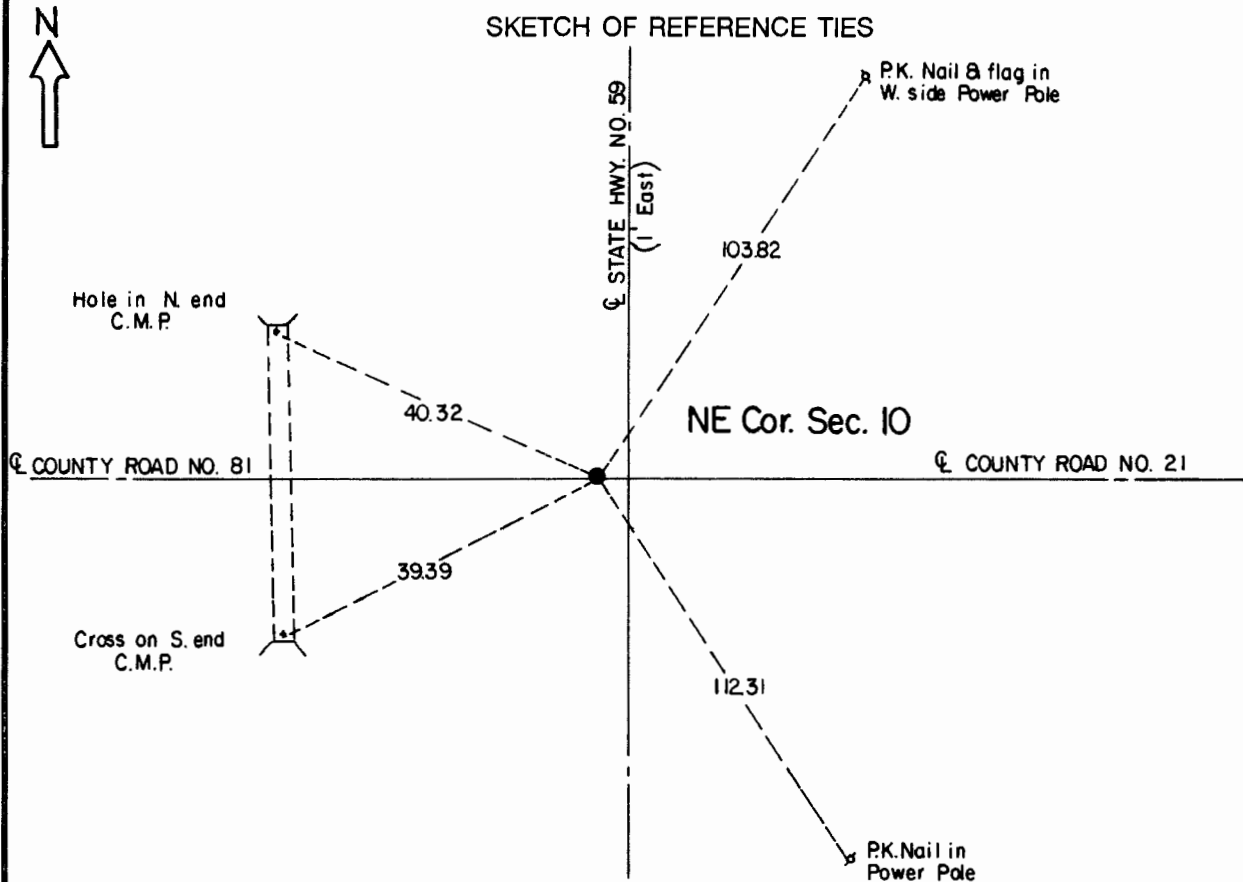


# CERTIFICATE OF LOCATION OF GOVERNMENT CORNER

**Northeast** Corner of Section **10** , Township **108** , Range **41** 5th P.M.

STATE OF MINNESOTA, County of Murray.

**Statement:** Oct. 27, 1989 - Found the brass plug placed the Minnesota Department of Highways. Left the monument as found.



Statement of evidence relative to this corner location is on the back of page.

I hereby certify that this document and the data contained herein was prepared by me or under my direct supervision and that I am a duly Registered Land Surveyor under the laws of the State of Minnesota.

*Duane A. Bonnema*  
Duane A. Bonnema

*Nov 6, 1989*  
Date

Minnesota Registration No. 14895

OFFICE OF THE COUNTY RECORDER  
COUNTY OF MURRAY NOV 15 1989

I hereby certify that this document was filed in the County Recorder's office at \_\_\_\_ M. on the \_\_\_\_ day of \_\_\_\_\_ A.D., 19 \_\_\_\_

County Recorder

*James V. Johnson*

By \_\_\_\_\_, Deputy

DOCUMENT NO. \_\_\_\_\_

**Northeast Cor. Sec. 10 T108N-R41W**

**Statement:**

- September 1861 *Original Government Land Office Surveyor L. G. M. Fletcher records in his field notes, "set post in mound with trench pits and a charred stake."*
- Aug. 22, 1899 *J. W. Woolstencroft, County Surveyor, records in the County Surveyor's Record Book, page 90, "Iron Stake 3/4" x 30"," while he was doing survey work in Section 3.*
- 1930+ *The Murray County Highway Engineer's Office records in their records "stone" and then give witness ties to the corner.*
- 1932 *The Minnesota Department of Highways records in their field notes "Sec. Cor.,9.7 feet ahead of PI,Brass Plug In place/Point of field stone." The notes show the stone being 1.4 feet West of the centerline tangent.*
- Oct. 27, 1989 *Duane A. Bonnema, LS Reg. No. 14895, removed 3 inches of asphalt pavement over a large area (approx. 17 feet North-South x 3 feet East-West) and found the brass plug, placed in 1932 by the Minnesota Department of Highways, in the concrete road surface.*